



DIAQUICK RAPID TESTS

Drugs of Abuse Urine Tests - Cassette



		Tests	Cut-Off (ng/mL)	REF	CE
Amphetamine	AMP	30	1,000	Z99004CE	✓
Barbiturates	BAR	30	300	Z99006CE	✓
Buprenorphine	BUP	30	10	Z04560CE	✓
Benzodiazepines	BZO	30	300	Z99001CE	✓
Cocaine	COC	30	300	Z99003CE	✓
Ethylglucuronide	ETG	30	500	Z15102CE	✓
Fentanyl	FYL	10	20	Z09640CE	✓
Ketamine	KET	10	1,000	Z09641CE	✓
Lysergic Acid Diethylamide	LSD	30	20	Z15106CE	✓
Ecstasy	MDMA	30	500	Z04570CE	✓
Methamphetamine	MET	30	1,000	Z99500CE	✓
Opiates, Morphine, Heroine	MOP	30	300	Z99005CE	✓
Methadone	MTD	30	300	Z99550CE	✓
Opiates, Morphine, Heroine	OPI	30	2,000	Z05011CE	✓
Oxycodone	OXY	30	100	Z06007CE	✓
Spice, Synthetic Marihuana	K2	30	50	Z13630CE	✓
Tricyclic Antidepressants	TCA	30	1,000	Z03040CE	✓
Marihuana/Cannabis	THC	30	50	Z99002CE	✓
Tramadol	TRA	30	100	Z10414CE	✓
6-Monoacetylmorphine	6-MAM	30	20	Z22101CE	✓

Drugs of Abuse Urine Tests - Dipstick

		Tests	Cut-Off (ng/mL)	REF	CE
Amphetamine	AMP	50	1,000	Z02504CE	✓
Barbiturates	BAR	50	300	Z02506CE	✓
Benzodiazepines	BZO	50	300	Z02501CE	✓
Cocaine	COC	50	300	Z02510CE	✓
Ecstasy	MDMA	50	500	Z05610CE	✓
Methamphetamine	MET	50	1,000	Z02500CE	✓
Opiates, Morphine, Heroine	MOP	50	300	Z02505CE	✓
Methadone	MTD	50	300	Z02550CE	✓
Phencyclidine	PCP	50	25	Z02560CE	✓
Marihuana/Cannabis	THC	50	50	Z02502CE	✓

Drugs of Abuse Urine Tests - Multi Panels



	Substance												Tests	REF	CE	
Multi-3	-	-	-	BZO	COC	-	-	MOP	-	-	-	-	-	30	Z06576CE	✓
Multi-3/1	-	-	BUP	-	-	-	-	MOP	MTD	-	-	-	-	30	Z09577CE	✓
Multi-4	AMP	-	-	-	COC	-	-	MOP	-	-	-	-	THC	30	Z02575CE	✓
Multi-5/3	AMP	-	-	-	COC	-	MET	MOP	-	-	-	-	THC	30	Z06502CE	✓
Multi-5/4	AMP	-	-	-	COC	MDMA	-	MOP	-	-	-	-	THC	30	Z11504CE	✓
Multi-5/6	AMP	-	-	BZO	COC	-	-	MOP	-	-	-	-	THC	30	Z06506CE	✓
Multi-6	-	-	-	BZO	COC	-	MET	MOP	MTD	-	-	-	THC	30	Z98907CE	✓
Multi-6/1	AMP	-	-	BZO	COC	-	MET	MOP	-	-	-	-	THC	30	Z03220CE	✓
Multi-6/4	AMP	-	BUP	BZO	-	-	MET	MOP	-	-	-	-	THC	30	Z08940CE	✓
Multi-6/7	-	-	BUP	BZO	COC	-	-	MOP	MTD	-	-	-	THC	30	Z09970CE	✓
Multi-6/10	AMP	-	-	BZO	COC	-	-	MOP	MTD	-	-	-	THC	30	Z11911CE	✓
Multi-7	AMP	-	BUP	BZO	COC	-	-	MOP	MTD	-	-	-	THC	30	Z12730CE	✓
Multi-10	AMP	BAR	-	BZO	COC	MDMA	MET	MOP	MTD	-	-	TCA	THC	30	Z06230CE	✓
	AMP	BAR	-	BZO	COC	MDMA	MET	MOP	MTD	-	-	TCA	THC	10	Z04231CE	✓
Multi-10/1	AMP	BAR	BUP	BZO	COC	MDMA	MET	MOP	MTD	-	-	-	THC	30	Z06235CE	✓
	AMP	BAR	BUP	BZO	COC	MDMA	MET	MOP	MTD	-	-	-	THC	10	Z06236CE	✓
Multi-10/3	AMP	-	-	BZO	COC	MDMA	-	MOP	MTD	OPI	PCP	TCA	THC	30	Z06103CE	✓
Multi-10/4	AMP	BAR	BUP	BZO	COC	MDMA	MET	-	MTD	OPI	-	-	THC	30	Z06104CE	✓
Multi-10/6	AMP	BAR	-	BZO	COC	-	MET	MOP	MTD	-	PCP	TCA	THC	30	Z06106CE	✓
Multi-10/7	AMP	BAR	-	BZO	COC	-	MET	-	MTD	OPI	PCP	TCA	THC	30	Z06107CE	✓
DOA Multi-6 Cup	AMP	-	-	BZO	COC	-	MET	MOP	-	-	-	-	THC	1	Z06667CE	✓

Drugs of Abuse Saliva Tests

	Substance	Tests	REF	CE
Alcohol Saliva Strip	0.02-0.3 % blood alcohol	25	Z06677CE	✓

Infectious Diseases



	REF	tests	whole blood	serum / plasma	urine	swab sample	faeces	CE
Chlamydia Cassette	Z98226CE	20	-	-	✓	✓	-	✓
Covid-19 Ag Cassette	Z20401CE	20	-	-	-	✓	-	✓
Covid-19 Ag Cassette	Z20999CE	20	-	-	-	✓	-	✓
Covid-19 Ag Cassette	Z20601CE	20	-	-	-	✓	-	✓
Dengue Combo Cassette	Z17241CE	20	✓	✓	-	-	-	✓
Dengue IgG/IgM Ab Cassette	Z06240	30	✓	✓	-	-	-	✓
Dengue NS1 Ag Cassette	Z17240CE	30	✓	✓	-	-	-	✓
H.pylori Cassette	Z06229CE	30	✓	✓	-	-	-	✓
H.pylori Stool Cassette	Z08090CE	20	-	-	-	-	✓	✓
	Z08091CE	5	-	-	-	-	✓	✓
Influenza Ag Dipstick	Z09440CE	25	-	-	-	✓	-	✓
Malaria P.f. Cassette	W06200	30	✓	-	-	-	-	✓
Malaria Pf./Pan Cassette	Z11200CE	25	✓	-	-	-	-	✓
Mononucleosis Cassette	Z06620CE	30	✓	✓	-	-	-	✓
Adenovirus Cassette	Z09620CE	5	-	-	-	-	✓	✓
Rotavirus Cassette	Z09610CE	5	-	-	-	-	✓	✓
Rota/Adeno Combi Cassette	Z09601CE	30	-	-	-	-	✓	✓
	Z09600CE	5	-	-	-	-	✓	✓
S.typhi IgG/IgM Ab Cassette	Z11450	25	✓	✓	-	-	-	✓
S.typhi/paratyphi Ag Cassette	Z11451	25	✓	✓	-	-	✓	✓
Strep.A Cassette	Z98223CE	20	-	-	-	✓	-	✓
Strep.A Dipstick	Z98230CE	20	-	-	-	✓	-	✓
Syphilis Cassette	Z06903CE	30	✓	✓	-	-	-	✓
Syphilis Dipstick	Z12903CE	25	✓	✓	-	-	-	✓

Tumour Markers

	REF	tests	whole blood	serum / plasma	faeces	CE
AFP Cassette	Z06020CE	30	✓	✓	-	✓
CEA Cassette	Z06030	30	✓	✓	-	✓
FOB Cassette	Z01101CE	25	-	-	✓	✓
	Z01102CE	5	-	-	✓	✓
FOB-TRF Combi Cassette	J13101CE	20	-	-	✓	✓
PSA Cassette	Z08010	30	✓	✓	-	✓

Aids, Hepatitis



	REF	tests	whole blood	serum / plasma	CE
HBsAb Dipstick	Z03232	50	-	✓	-
HBsAg Cassette	Z00350	30	-	✓	-
	Z06351	30	✓	✓	-
HBsAg Dipstick (5mm)	Z04225	50	-	✓	-
HBsAg Dipstick (3mm)	Z98224	50	-	✓	-
HCV Plus	H18200	25	-	✓	✓
HCV Plus WB	H18201	25	✓	✓	✓
HIV Plus	H18100	25	-	✓	✓
HIV Plus WB	H18101	25	✓	✓	✓
HIV Triline Cassette	W06112	30	✓	✓	-

ToRCH

	REF	tests		serum / plasma	CE
Toxoplasma IgG/IgM Cassette	J15010	25		✓	-
Toxoplasma IgM Cassette	J15011	25		✓	✓
Rubella IgM Cassette	J15020	25		✓	✓
CMV IgM Cassette	J15030	25		✓	✓
HSV 1/2 IgM Cassette	J15040CE	25		✓	✓

Cardiac Markers

	REF	tests	whole blood	serum / plasma	CE
Cardiac Combo Cassette	Z08234CE	20	✓	✓	✓
	Z08233CE	5	✓	✓	✓
Troponin I Cassette	Z08120CE	30	✓	✓	✓
	Z08125CE	5	✓	✓	✓
Troponin T Cassette	Z20300	30	✓	✓	✓
	Z20301	10	✓	✓	✓

Pregnancy / Fertility



	REF	tests	serum / plasma	urine	CE
hCG Cassette	Z98404CE	30	-	✓	✓
hCG Dipstick (5 mm)	J01402-1CE	50	-	✓	✓
hCG Dipstick (3 mm)	J01402-2CE	50	-	✓	✓
hCG Combo Cassette	Z01405CE	30	✓	✓	✓
hCG Combo Dipstick (5mm)	Z03403-1CE	50	✓	✓	✓
hCG Combo Dipstick (3mm)	Z03403-2CE	50	✓	✓	✓
LH Cassette	Z98502CE	30	-	✓	✓
LH Dipstick	Z06507CE	50	-	✓	✓

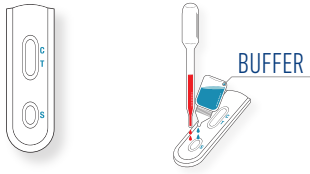
Others

	REF	tests	whole blood	serum / plasma	urine	CE
CRP Cassette	Z06021	20	✓	✓	-	✓
Microalbumin Dipstick	Z08070CE	50	-	-	✓	✓

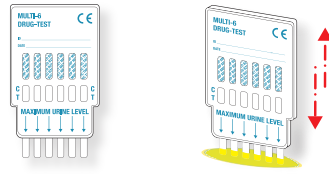
Testing Methods & Results



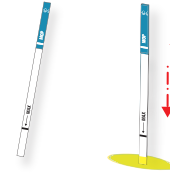
CASSETTES



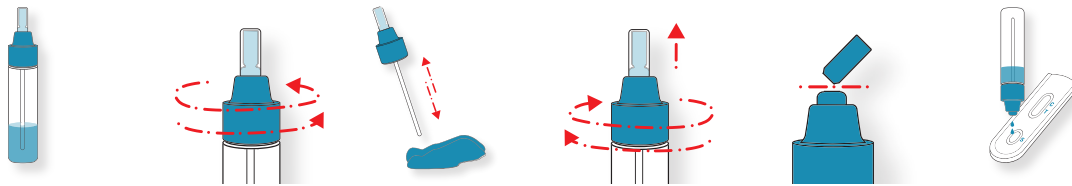
MULTI-PANELS



DIPSTICKS



FAECAL SAMPLES

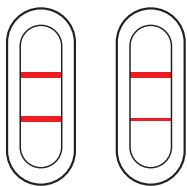


SWAB SAMPLES



TEST RESULTS - SANDWICH ASSAY

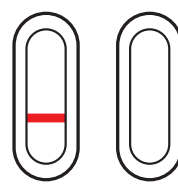
POSITIVE



NEGATIVE



INVALID

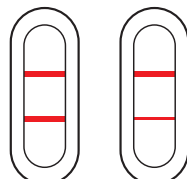


TEST RESULTS - COMPETITIVE ASSAY

POSITIVE



NEGATIVE



INVALID

